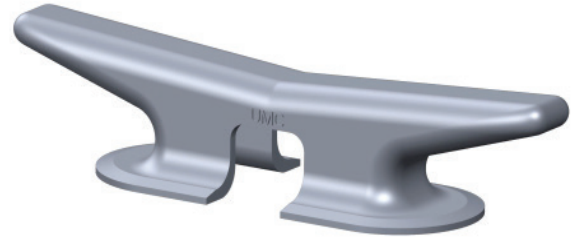


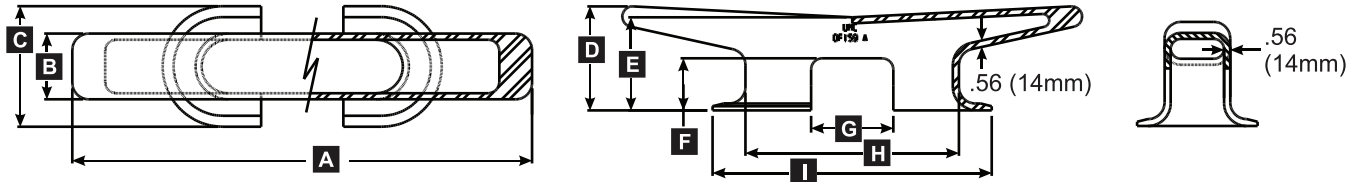
Kevel | 36", 42", 48" Cast Steel

Universal Kevel.
ASTM A27-70-36 Cast Steel



Model Number	Description	Autocad PDF/DXF	Part Number	Weight Total Lbs (Kgs.)
UMC-48A	36" Kevel		01050-301A	81 (37)
UMC-36A	42" Kevel		01060-301A	114 (52)
UMC-159A	48" Kevel		01070-301A	175 (79)

Large Kevels ASTM A27-70-36 Cast Steel



MODEL	DESCRIPTION	PART #	DIMENSIONS IN INCHES (MM)									LBS (KGS)
			A	B	C	D	E	F	G	H	I	
UMC-48A	KEVEL, 36"	01050-301A	36" (914)	5" (127)	10" (254)	7.13" (181)	5.88" (149)	3.5" (89)	5" (127)	16.5" (419)	22.5" (572)	81 (37)
UMC-36A	KEVEL, 42"	01060-301A	42" (1067)	6" (152)	11" (279)	7.5" (191)	6.5" (165)	3.25" (83)	7.5" (191)	19.5" (495)	25.5" (648)	114 (52)
UMC-159A	KEVEL, 48"	01070-301A	48" (1219)	6.5" (165)	11" (279)	10" (254)	8.75" (222)	5" (127)	8" (203)	21" (533)	27" (686)	175 (79)