

### BMHC15X23S - Manhole - 15" X 23"

#### 20-Bolt - Weld Stud

Baier's complete line of multi-bolt manholes serves as a great inexpensive option for applications where frequent access is not required. Ideal for tank top covers, fuel and water tank access, inspection access to ship voids, barges, sanitary and digester tanks, clean outs and more. These water-tight manholes feature simple designs and utilize high strength steel.

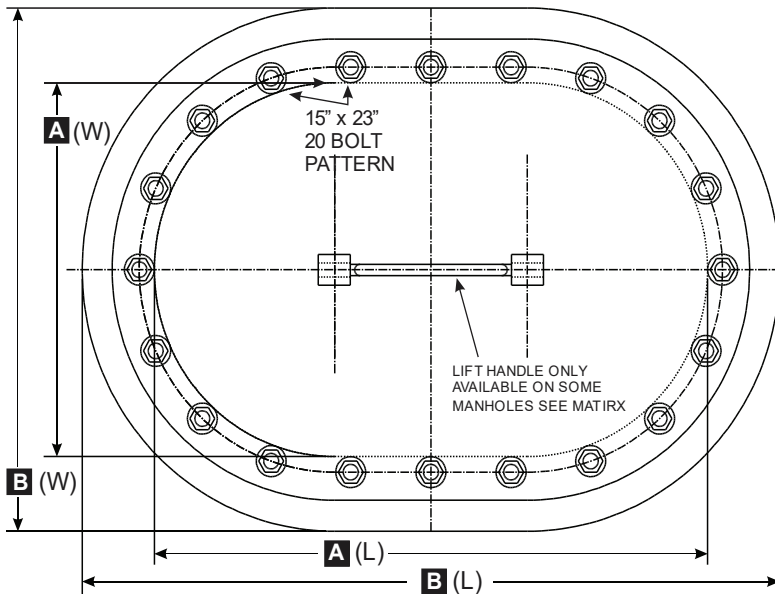
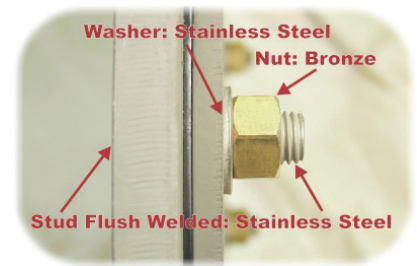
#### Features:

- High strength carbon steel construction
- Hardware combinations of dissimilar metal prevent galling and corrosion (Not available on all models - see Manhole Matrix for details)
- High-quality neoprene rubber gaskets ensure water tight seal (oil resistant Buna-N Optional)
- Neoprene Gasket material is UV resistant to prevent cracking and memory fatigue
- High strength carbon steel construction
- Hardware combinations of dissimilar metal prevent galling and corrosion (Not available on all models - see Manhole Matrix for details)
- High-quality neoprene rubber gaskets ensure water tight seal (oil resistant Buna-N Optional)
- Neoprene Gasket material is UV resistant to prevent cracking and memory fatigue



Model Number	Description	Part Number	Weight Total Lbs (Kgs.)	Clear Opening In. (mm)	Cutout Dimension in. (mm)
08866-101S	Manhole -15X23 20-Bolt	BMHC15X23S		15" X 23"	
08866-101Z	Manhole -15X23 20-Bolt w/ 3" NPT Raised	BMHC15X23Z		15" X 23"	
08866-101H	Manhole -15X23 20-Bolt w/ 3" NPT Flush	BMHC15X23H		15" X 23"	

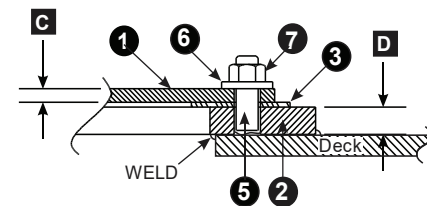
All of our manholes meet the ABS (American Bureau of Shipping) requirements for design and materials



#### BILL OF MATERIAL: BMHC15X23S

PC.NO.	DESCRIPTION	MATERIAL
1	COVER	STEEL (PRIMED)
2	DECK RING	STEEL (PRIMED)
3	GASKET	BUNA
4	BOLT	STAINLESS STEEL
5	STUD	NA
6	WASHER	STAINLESS STEEL
7	NUT	BRONZE
8	COAMING	STEEL (PRIMED)

#### EXAMPLE: STUD WELD



### Manhole Product Matrix

BAIER P/N P/N	DRAWING #	MODEL #	BOLT TYPE	BOLT TYPE	BOLT LGNTH	A(W)	A(L)	B(W)	B(L)	C	D	E	WGHT LBS	BOLT/ STUD	NUT	WSHR	GSKT	HNDL Y/N
15" x 23"	20 Bolt Flush																	
BMHC15X23S	08866-101S		STUD WELD	3/4-10	2.25	15	23	21	29	.393	.787	N/A	104	SS	BR	SS	BUNA	N
15" x 23" w/ 3" NPT	20 Bolt Flush	3" NPT PLUG																
BMHC15X23Z	08866-101Z	RAISED PLUG	STUD WELD	3/4-10	2.25	15	23	21	29	.393	.787	N/A	125	SS	BR	SS	BUNA	N
BMHC15X23Z	08866-101H	FLUSH PLUG	STUD WELD	3/4-10	2.25	15	23	21	29	.393	.787	N/A	125	SS	BR	SS	BUNA	N



1-800-455-3917  
206-632-2441 (FAX)  
sales@baiermarine.com  
Marine Company, Inc.