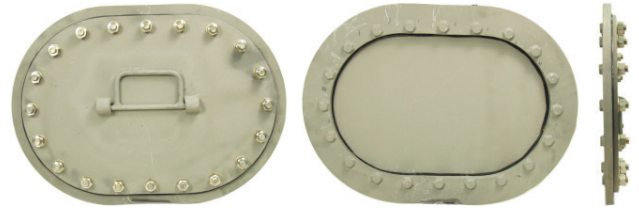


BMHC15X23BS BAIER - Manhole - 15" X 23" 20-Bolt - Weld Bolt

Baier's complete line of multi-bolt manholes serves as a great inexpensive option for applications where frequent access is not required. Ideal for tank top covers, fuel and water tank access, inspection access to ship voids, barges, sanitary and digester tanks, clean outs and more. These water-tight manholes feature simple designs and utilize high strength steel.

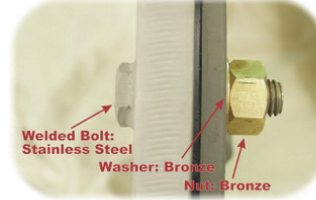
Features:

- High strength carbon steel construction
- Hardware combinations of dissimilar metal prevent galling and corrosion (Not available on all models - see Manhole Matrix for details)
- High-quality neoprene rubber gaskets ensure water tight seal (oil resistant Buna-N Optional)
- Neoprene Gasket material is UV resistant to prevent cracking and memory fatigue
- High strength carbon steel construction
- Hardware combinations of dissimilar metal prevent galling and corrosion (Not available on all models - see Manhole Matrix for details)
- High-quality neoprene rubber gaskets ensure water tight seal (oil resistant Buna-N Optional)
- Neoprene Gasket material is UV resistant to prevent cracking and memory fatigue



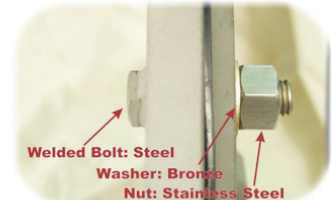
Model Number	Description	Part Number	Clear Opening In. (mm)	Cutout Dimension in. (mm)	Autocad PDF/DXF
BMHC15X23BS	Manhole - 15x23 Weld Bolt (Steel)	02590-105A	15" X 23"		
UMC-503	Flush 15x23 20-Bolt Manhole	02590-101A	15 x 23 (380 x 584)		

WELD BOLT - Combo A



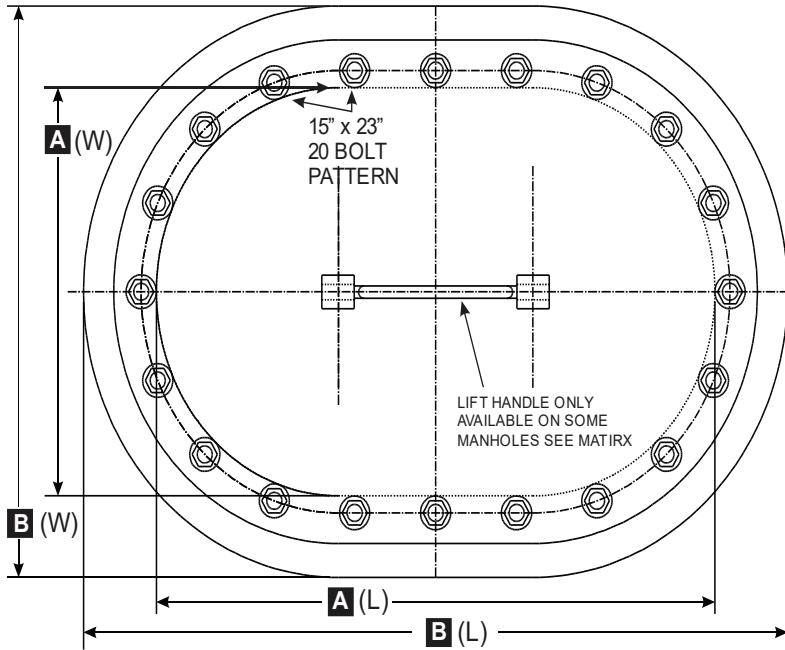
RMHC15X23BS

WELD BOLT - Combo B



RMHC15X23R7

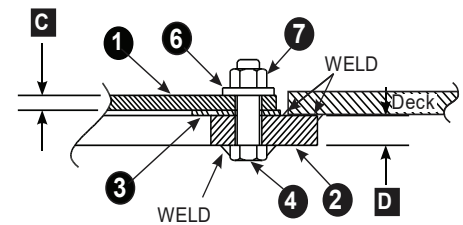
All of our manholes meet the ABS (American Bureau of Shipping) requirements for design and materials



BILL OF MATERIAL: BMHC15X23BS

PC.NO.	DESCRIPTION	MATERIAL
1	COVER	STEEL (PRIMED)
2	DECK RING	STEEL (PRIMED)
3	GASKET	BUNA
4	BOLT	NA
5	STUD	STAINLESS STEEL
6	WASHER	BRONZE
7	NUT	SEE MATRIX
8	COAMING	STEEL (PRIMED)

EXAMPLE: WELD BOLT



1-800-455-3917
206-632-2441 (FAX)
sales@baiermarine.com
Marine Company, Inc.

Manhole Product Matrix

BAIER P/N P/N	DRAWING #	MODEL #	BOLT TYPE	BOLT TYPE	BOLT LGNTH	A(W)	A(L)	B(W)	B(L)	C	D	E	WGHT LBS	BOLT/ STUD	NUT	WSHR	GSKT	HNDL Y/N
15" x 23"	20 Bolt Flush																	
BMHC15X23BS	02590-105A	UMC-503	WELD BOLT	5/8-11	2.25	15	23	21	29	.393	.787	N/A	95	SS	BR	BR	BUNA	Y
BMHC15X23BSS	02590-101A	UMC-503	WELD BOLT	5/8-11	2.25	15	23	21	29	.393	.787	N/A	95	SS	SS	BR	BUNA	Y