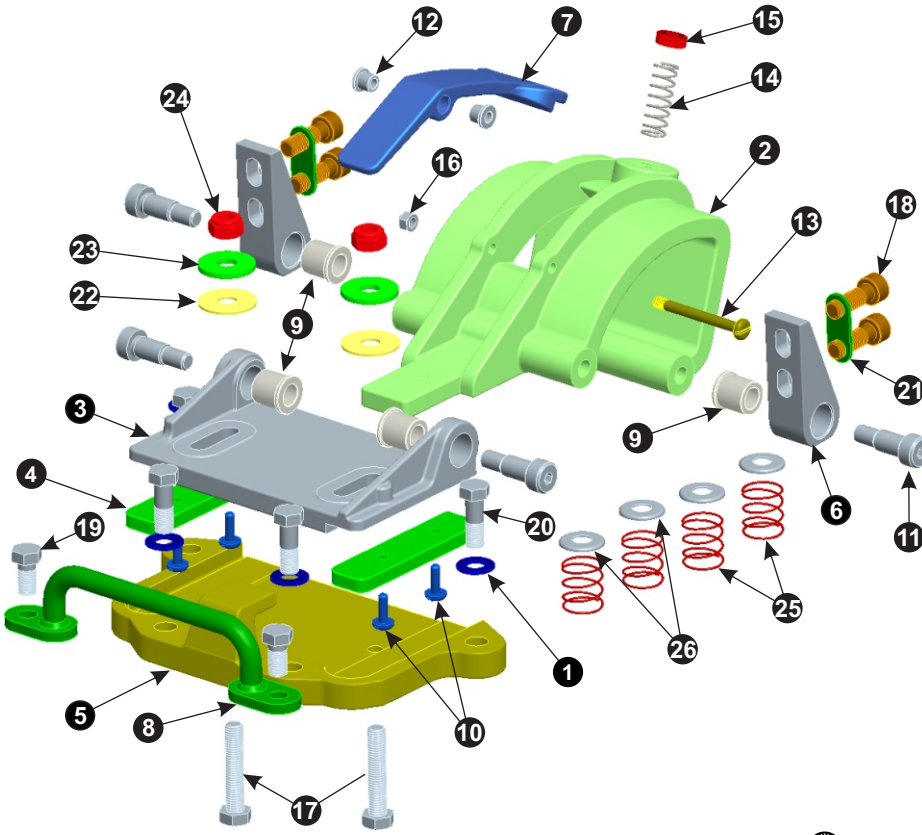


BAIER INTERNAL HINGE

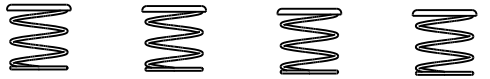
EXPLODED VIEW



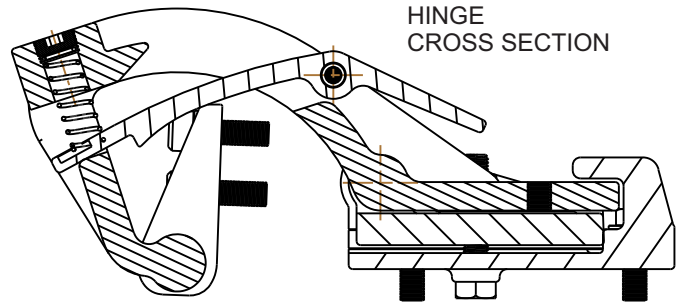
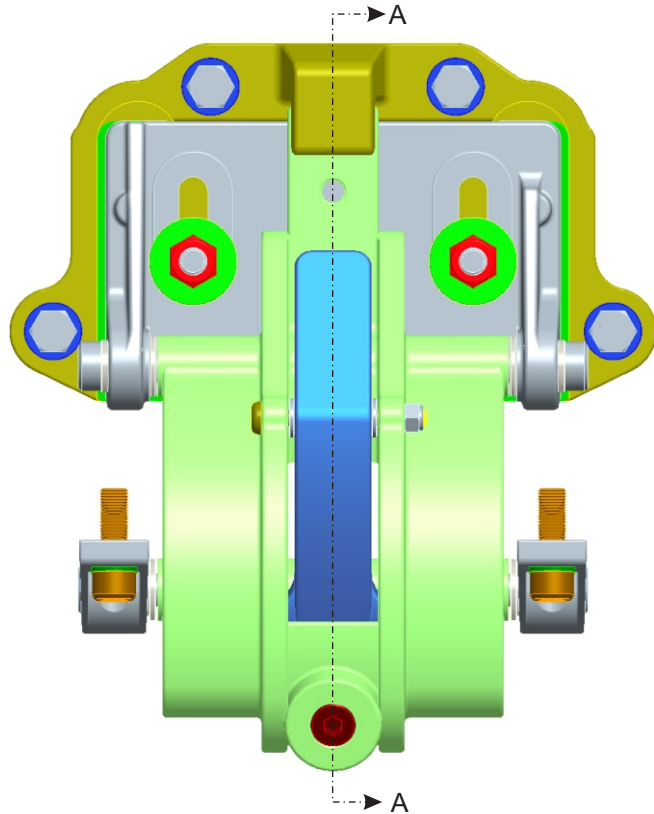
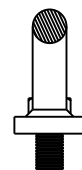
BILL OF MATERIAL: 08863-106				
#	DESC.	MAT	P/N	QTY
1	WASHER 3/8	SS	08860-803A	4
2	HINGE	SS	08863-242A	1
3	SLIDE PLATE	SS	08863-243A	1
4	SLIDES	DL	08863-244A	2
5	SLIDE BASE	SS	08863-245A	1
6	DECK RING MOUNT	SS	08863-247A	2
7	LOCKING LATCH	SS	08863-248A	1
8	GRAB HANDLE	SS	08863-405A	1
9	BUSHING	DL	08863-810A	4
10	SCREW M6 16mm	SS	08863-811A	4
11	SHOULDER BOLT	SS	08863-811A	4
12	BUSHING	DL	08863-814A	2
13	SCREW M6 60mm	SS	08863-816A	1
14	SPRING 14mm	SS	08863-817A	1
15	PLUG, 3/8 NPT	SS	08863-818A	1
16	NUT, NYLOCK M6	SS	08863-819A	1
17	BOLT M10 50mm FUL THD	SS	08863-820A	2
18	BOLT M10 30 mm SOC	SS	08863-821A	4
19	BOLT M10 20mm	SS	08863-822A	2
20	BOLT M10 30mm	SS	08863-823A	4
21	WASHER	SS	08863-817A	2
22	WASHER M10	UP	08864-803A	2
23	WASHER M10	SS	08864-805A	2
24	NYLOCK NUT M10	SS	08864-807A	2
25	SPRING	SS	08864-809A	4
26	SPRING CAP	SS	08864-810A	4

MATERIAL KEY	
SS	- STAINLESS STEEL
DL	- DELRIN
UP	- UHMW POLY

DOG ARM LIFT SPRING
FOR VERTICAL INSTALLATION



TOP VIEW



SECTION A:A

BAIER Marine Company, Inc.

1-800-455-3917
206-632-2441 (FAX)
sales@baiermarine.com

BAIER INTERNAL HINGE
INTERNAL HINGED FOR USE ON
BFHHQ SERIES QUICK ACTING
WITH BUILT-IN T-HANDLE

DWG. NO. 08863-106