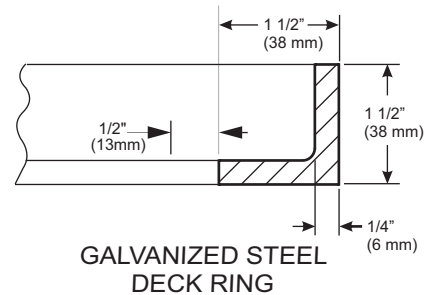


BILL OF MATERIAL: 08861-121

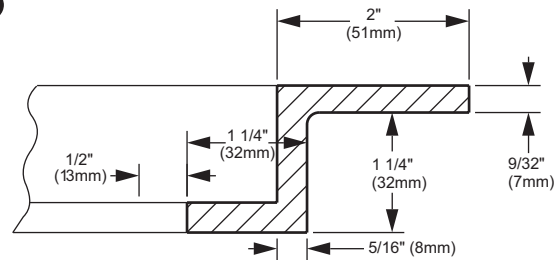
| PC.NO. | DESCRIPTION | MATERIAL |
|--------|-----------------|------------------|
| 1 | COVER | ALUMINUM ONLY |
| 2 | STRONGBACK | ALUMINUM ONLY |
| 3 | BOLT (1 1/2" Ø) | STAINLESS STEEL |
| 4 | GASKET | NEOPRENE |
| 5 | WASHER | STAINLESS STEEL |
| 6 | WASHER | NEOPRENE |
| 7 | ROD (1/2" Ø) | GALVANIZED STEEL |
| 8 | DECK RING | *** |
| 9 | T-HANDLE | STAINLESS STEEL |
| 10 | LUBE ZERK | ANNODIZED STEEL |
| 11 | HINGE PIN | STAINLESS STEEL |

NOTE: *** CORROSION RESISTANT ALUMINUM, OR GALVANIZED STEEL

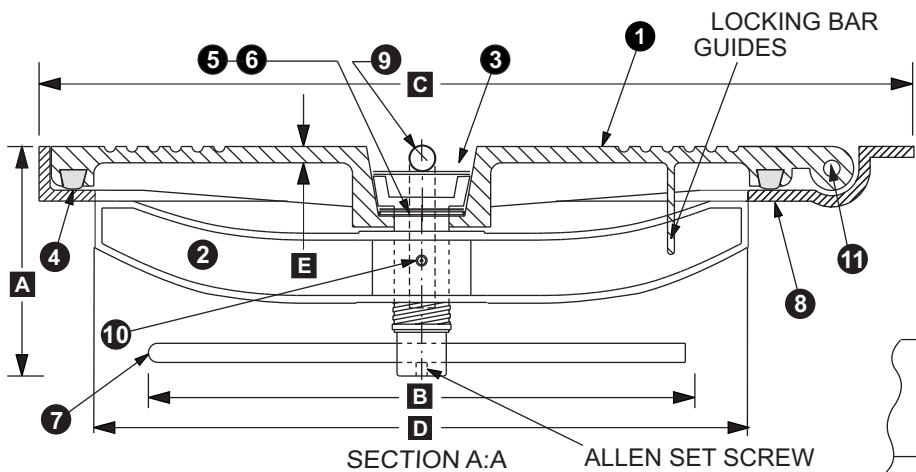
NOTE: BUTT WELD ON STEEL AND ALUMINUM DECKS. BOLT DOWN ON WOOD AND FIBERGLASS DECKS (FLANGES SUPPLIED BLIND - SHIPYARD TO DRILL TO SUIT)



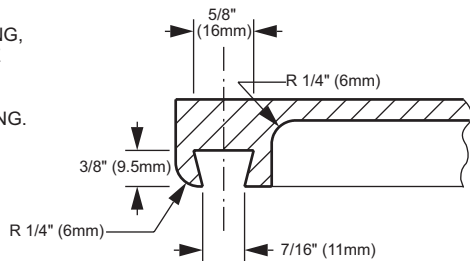
GALVANIZED STEEL DECK RING



CAST ALUMINUM DECK RING



SECTION A:A ALLEN SET SCREW



GASKET GROOVE, SECTION B:B

IMPORTANT: WHEN ORDERING, PLEASE SPECIFY OUTSIDE DIAMETER (C) OR CLEAR OPENING (D). UNITS ARE IDENTIFIED BY CLEAR OPENING.

| HATCH WEIGHTS (LBS.) | |
|----------------------|---------------------|
| Model Number | BFHHOTH15X24 |
| Material | AL ST |
| Cover | 32 (14.5) 76 (34.4) |
| Deck Ring | 10 (4.5) 27 (12.2) |

| Model Number | DIMENSIONS INCHES (mm) | | | | | |
|--------------|------------------------|--------------|------------------------------|-----------------------------|---------------------|------------|
| | A | B | C(ST) | C(AL) | D | E |
| BFHHOTH15X24 | 5 1/4 (133) | 12 1/2 (318) | 30 7/8 x 22 7/16 (784 x 570) | 30 1/2 x 23 3/8 (775 x 593) | 24 x 15 (610 x 381) | 7/32 (5.6) |

BAIER Marine Company, Inc.
 1-800-455-3917
 206-632-2441 (FAX)
 sales@baiermarine.com

BAIER FLUSH HATCH
 HINGED DOGGED TYPE WITH
 BUILT-IN T-HANDLE
 TYPE "C" POSITIVE LOCKING
 MODEL BFHHOTH15X24

DWG. NO. 525

T-HANDLE STRONGBACK